

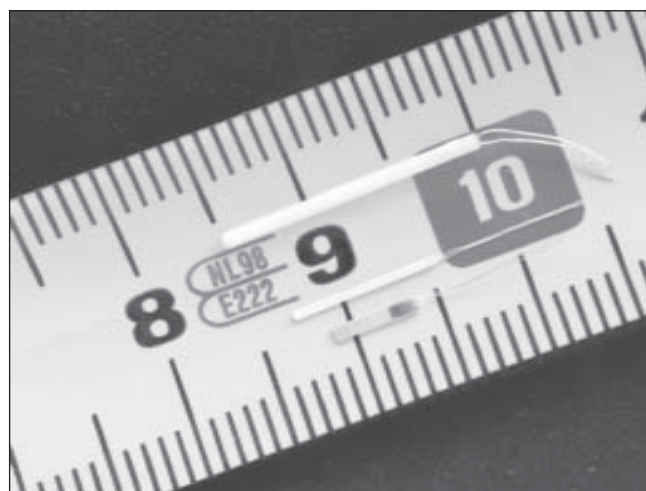
# Miniature Resistance Thermometer

## Miniature Mineral-Insulated Thermometer Pt 100/0

Sheath diameter 1.0 mm or with measuring tip 1.0 mm Ø or reinforced to 1.2 mm Ø. Measuring resistor in wire-wound or flat-form version. Hard-wired connecting cable, FEP- (TEFLON) insulated. True four-wire circuitry ex measuring resistor circuitry.

### Measuring Resistors

Measuring resistors are available as wire-wound ceramic version ( picture top and middle ) and as flat-form version ( picture below ).



### Form WL - 1.0

Type WL - 1.0 has a built in measuring resistor in ceramic (wire-wound) version. The metal sheath diameter is constant 1.0 mm.



### Form WL - 1.2/1.0

Type WL - 1.2/1.0 has a built in measuring resistor in flat-form version. The metal sheath diameter is 1.0 mm, the measuring tip is reinforced to 1.2 mm in diameter. The length of the reinforced part is 14 mm.



---

## Technical Data

<b>Measuring resistor:</b>	Pt 100/0 according to EN 60 751		
<b>Dimensions:</b>	Ceramic resistor 0.5 diam. x 8 mm length Flat form resistor 0.8 x 0.8 mm x 5 mm length		
<b>Accuracy class:</b>	IEC 60 751 Class A or B Individual calibration upon request		
<b>Connection:</b>	4 - wire connection ex measuring resistor (other versions upon request)		
<b>Dimensions:</b>	Sheath diameter 1.0 mm with ceramic resistor; 1.0 mm with tip 1.2 mm x 14 mm with flat-form resistor  Element length min. approx. 50 mm  Standard cable length 2 m or upon request		
<b>Response time <math>t_{90}</math>:</b>	Ceramic resistor	Flat-form resistor	
	Air 2 m/s	< 14 s	< 12 s
	Water 0.2 m/s	< 1.2 s	< 1.5 s
<b>Material:</b>	Sheath material no. 1.4541 Inner conductor copper, approx. 4.5 Ohm/m single length		
<b>Connecting cable:</b>	4 - conductor stranded copper wire; cross-section 0.14 mm <sup>2</sup> conductor and cable FEP- ( TEFLON ) insulated.		
<b>Measuring range:</b>	-40 to +350 °C (recommended), max. 400 °C		
<b>Ordering code:</b>	WL - 1.0 - 1Pt - Class - Length in mm - Cable in m ( Ceramic resistor, constant diameter )  WL - 1.2/1.0 - 1Pt - Class - Length in mm - Cable in m ( Flat-form resistor, measuring tip 14 mm long, reinforced )  WLS - 1.0 - 1Pt - Class - Length in mm - Cable in m ( As WL, but with LEMO Plug 4 - pole, size 0 )  WLS - 1.2/1.0 - 1Pt - Class - Length in mm - Cable in m ( As WL, but with LEMO plug, 4 - poles, size 0 )		

We reserve the right to change any specification without prior notice in line with our policy of continuous technical improvement.

### RÖSSEL-Messtechnik GmbH

Lohstraße 2  
59368 Werne/GERMANY  
Fon: +49 (0) 2389 409-0  
Fax: +49 (0) 2389 409-80  
Mail: info@roesselwerne.de  
Web: www.roesselwerne.de

### RÖSSEL-Messtechnik GmbH

Spenerstraße 1  
01309 Dresden/GERMANY  
Fon: +49 (0) 351 31225-0  
Fax: +49 (0) 351 31225-25  
Mail: info@roesseldresden.de  
Web: www.roesseldresden.de

### RÖSSEL

Eikenlaan 253d  
2404BP Alphen a/d Rijn  
THE NETHERLAND  
Fon: +31 (0) 172 493141  
Fax: +31 (0) 172 495043  
Mail: info@rossel.nl/Web: www.rossel.nl